

Health and Safety Authority

Michael Mc Donagh
Senior Inspector
Construction, Work at Height, Fire
Health and Safety Authority



Introduction

- The Construction Sector
- Statistics and Trends
- Legislation
- HSA Strategy

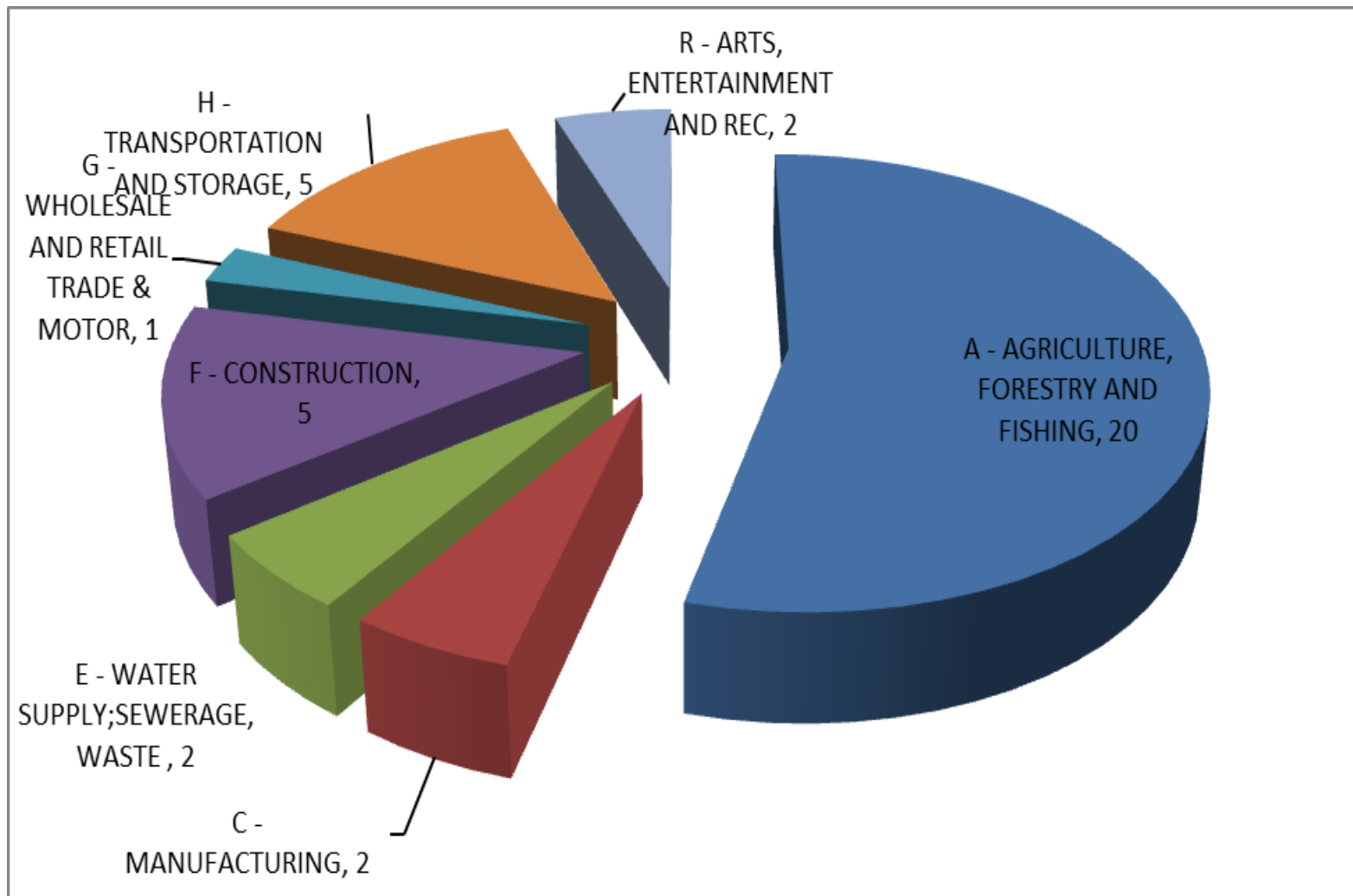
The Construction Sector

- Currently employees c. 150,000 (peak 2007 of c. 270,000 and low in 2013 of c. 95,000)
- Construction Industry Federation (CIF) forecast an average 9% annual growth in the sector to reach €20billion output by 2020.
- CIF predict employment could rise to 213,00 by 2020.
- **HSA/ESRI research shows new entrants 4 times more likely to be involved in accidents**
- Construction growing by c. 1,000 new employees / month
- Types of growth – infrastructure / commercial and industrial growth / housing demand

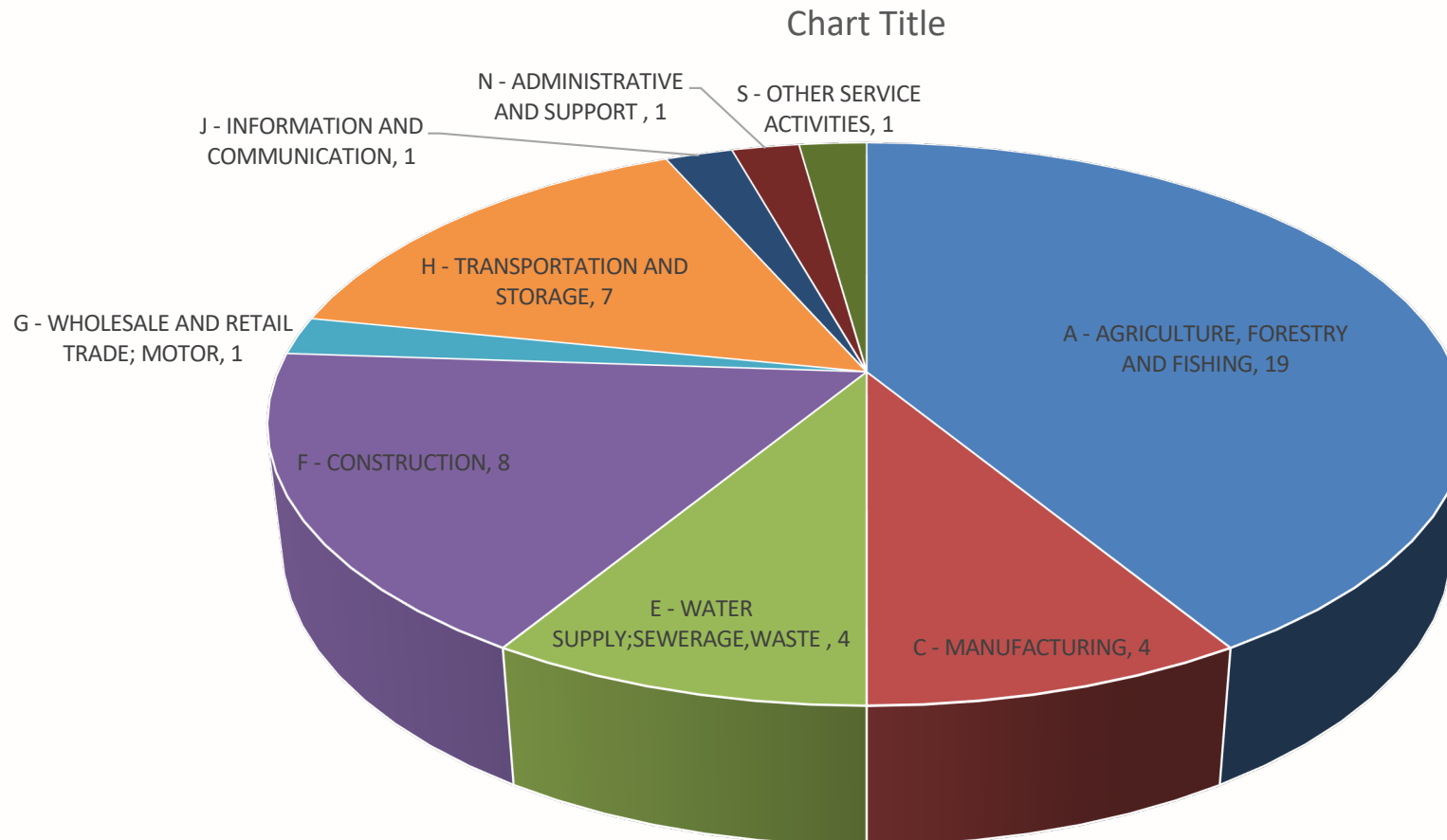
Inspections

- C. 4,000 Construction inspections in POW (total c. 11,000)
- Key target sector – high risk sector / increasing numbers of new and returning workers
- Key area of enforcement and prosecutions
- 2 Specific campaigns – June and October

2018 Fatal Accidents



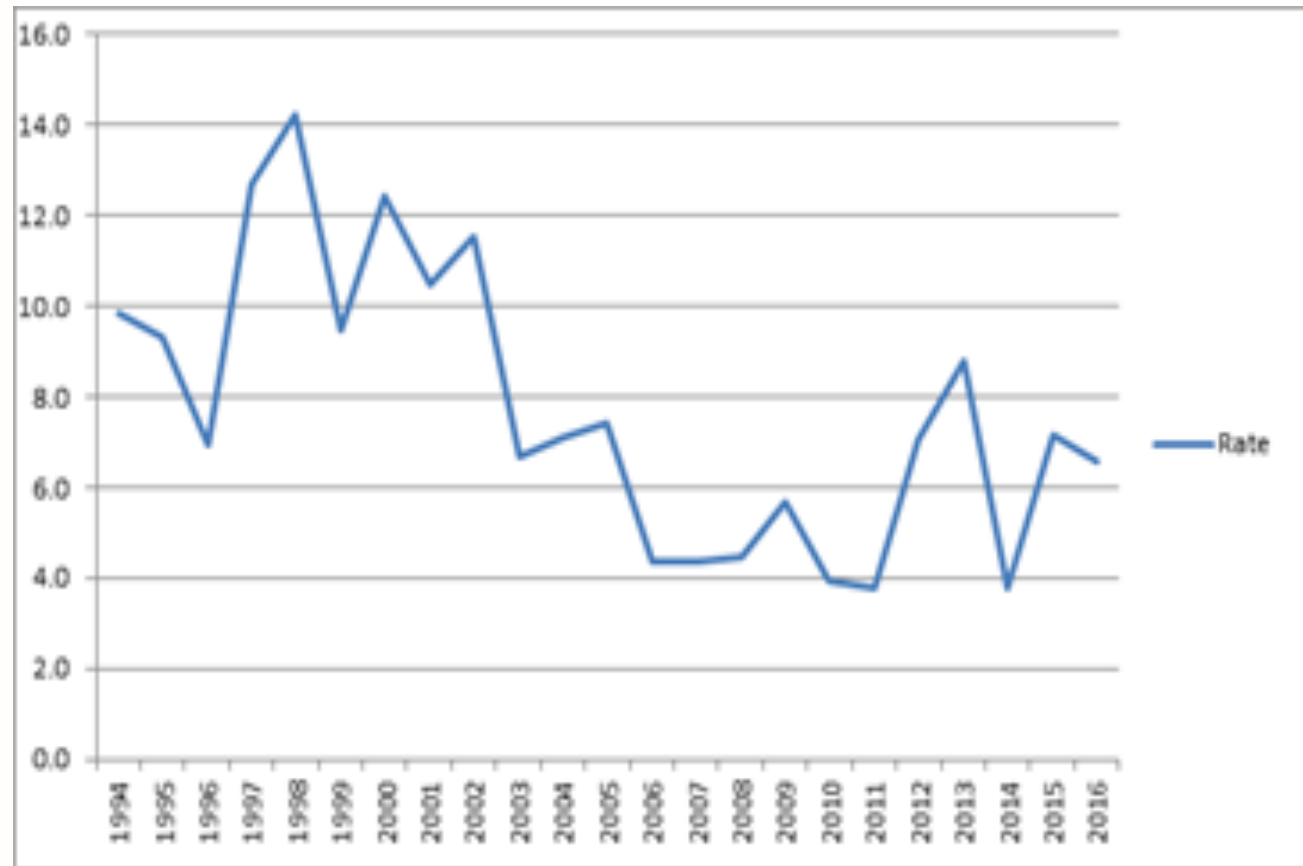
2019 Fatal Accidents (to date)



Fatal accident rate

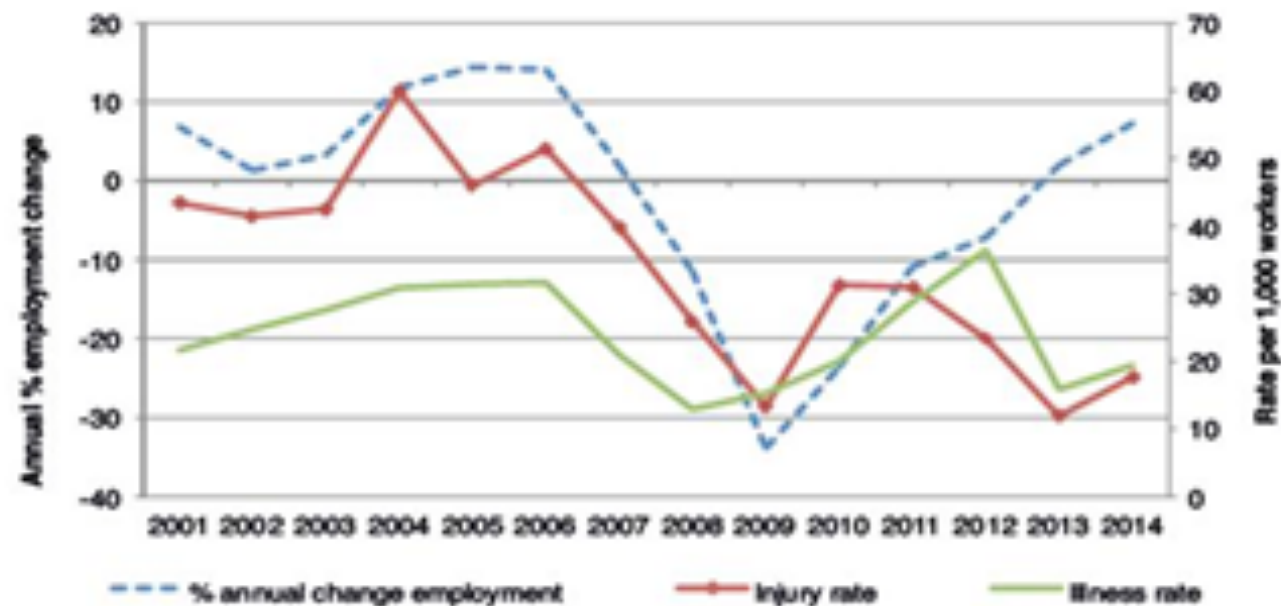
Year	2014	2015	2016	2017	2018	2019 (To date)
Total Fatalities	55	56	45	47	37	46
Total Fatality Rate*	2.5	2.5	2.1	1.9	1.6	-----
Construction Fatalities	8	11	9	6	5	8
Construction Fatality Rate*	5.5	7.2	6.6	3.1	3.4	-----
Construction Fatalities as % of Total	15%	20%	20%	13%	14%	17%

Rate of fatal accidents to workers per 100,000 persons employed, 1994-2016.



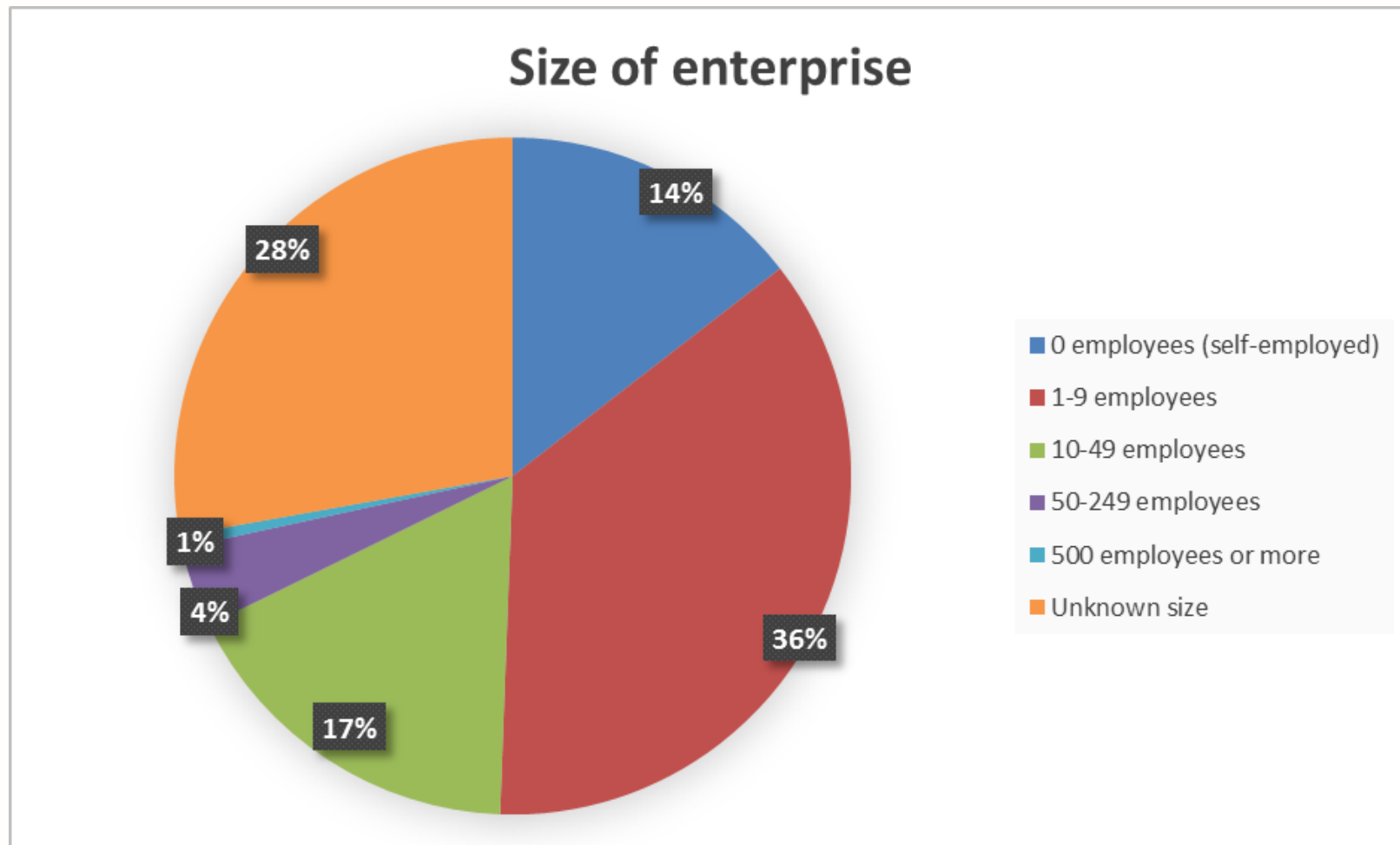
Non-fatal injury rate and illness rate

Figure 1: Rates of work-related injury and illness and annual percentage change in employment in the construction sector, 2001–2014

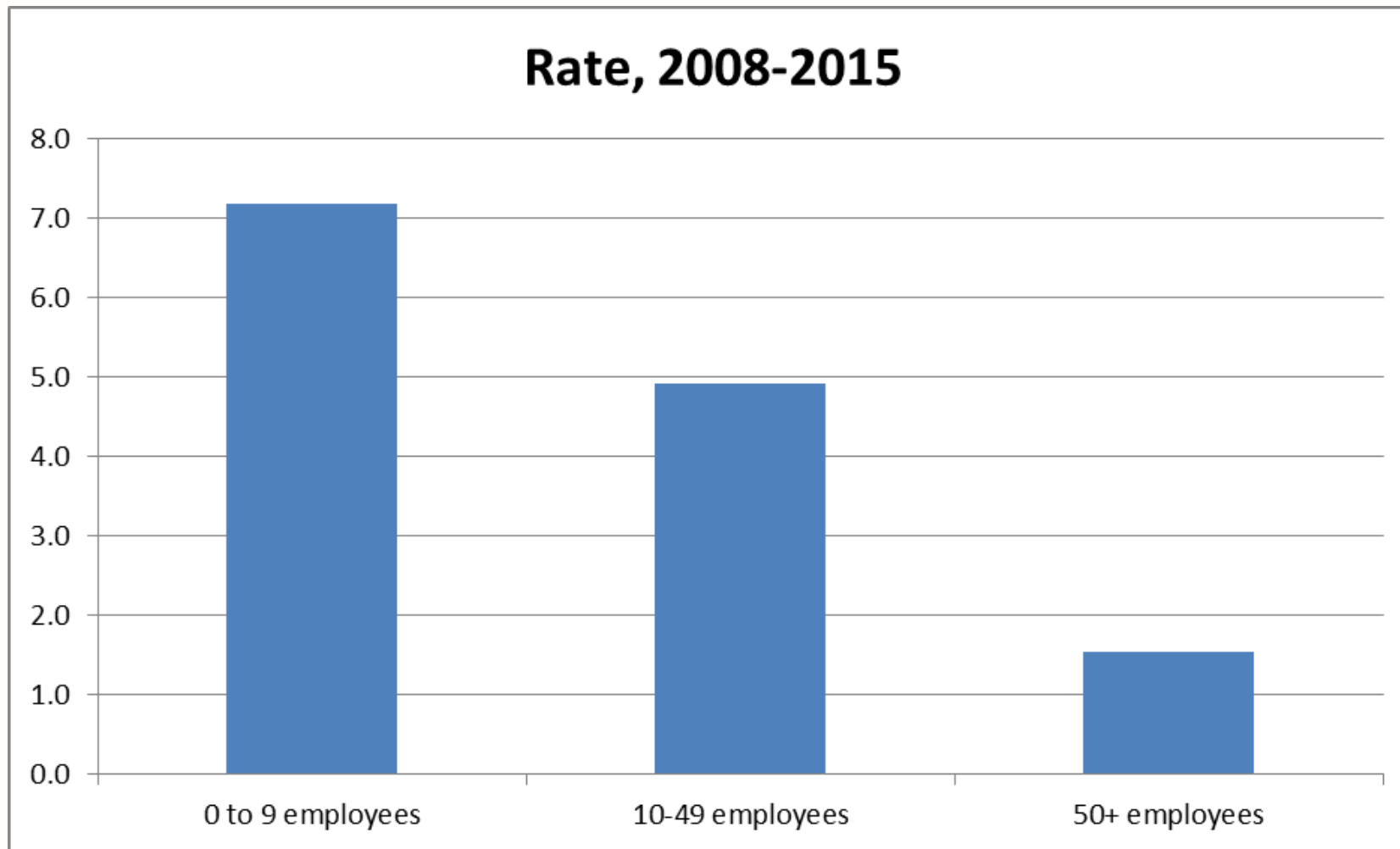


Source: OHS modules on work-related accidents and illnesses, authors' analysis.
Note: The illness rate in 2012 is not directly comparable to prior years, due to changes in question wording.

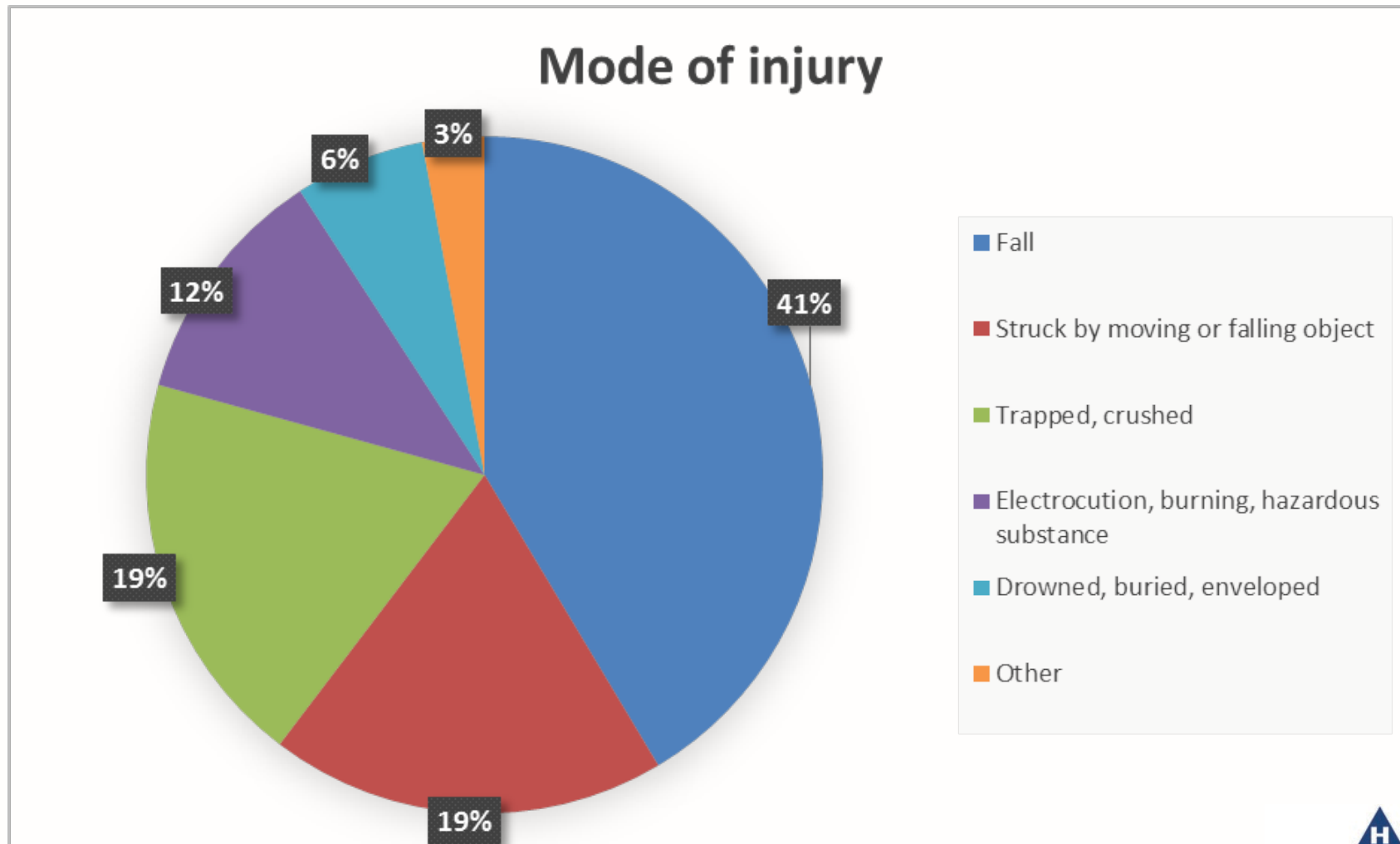
Size of enterprise of duty-holders where workers or non-workers had a fatal accident, 1989-2016.



Rate of fatal accidents per 100,000 persons employed in each size of enterprise, 2008-2015.



Most common broad categories of mode of injury for fatal accidents, 1989-2016.



Compliance Activities – To Date (11/11/2019)

All Sectors	Improvement Notice	Prohibition Notice	Total	Verbal Advice	Written Advice
Construction Enforcement as %	350 (104)	526 (369)	876 (473)	3171 (1478)	5478 (2335)
	30%	70%	54%	47%	43%

Legislation

Safety, Health and Welfare at Work (Construction)(Amendment) Regulations 2019

S.I. No. 129 of 2019

- to facilitate the recognition by SOLAS of equivalent registration cards to Safe Pass and construction skills certification schemes from states other than Member States
- change any references to FÁS to SOLAS and similarly change references to FETAC to QQI
- Review underway of Training / Certification Schemes

Our Strategy 2019-2021

(starts with our Legal Mandate)



- To regulate the safety, health and welfare of people at work and those affected by work activities

delivered

- To promote improvement in the safety, health and welfare of people at work and those affected by work activities

- To regulate and promote the safe manufacture, use, placing on the market, trade and transport of chemicals

through our

- To act as a surveillance authority in relation to relevant single European market legislation

- To act as the national accreditation body for Ireland.

- Mission, Vision & Values
- Strategic Priorities & Goals
- Annual Work Plans

Key Strategic Topics

- Targeting of resources - 80:20

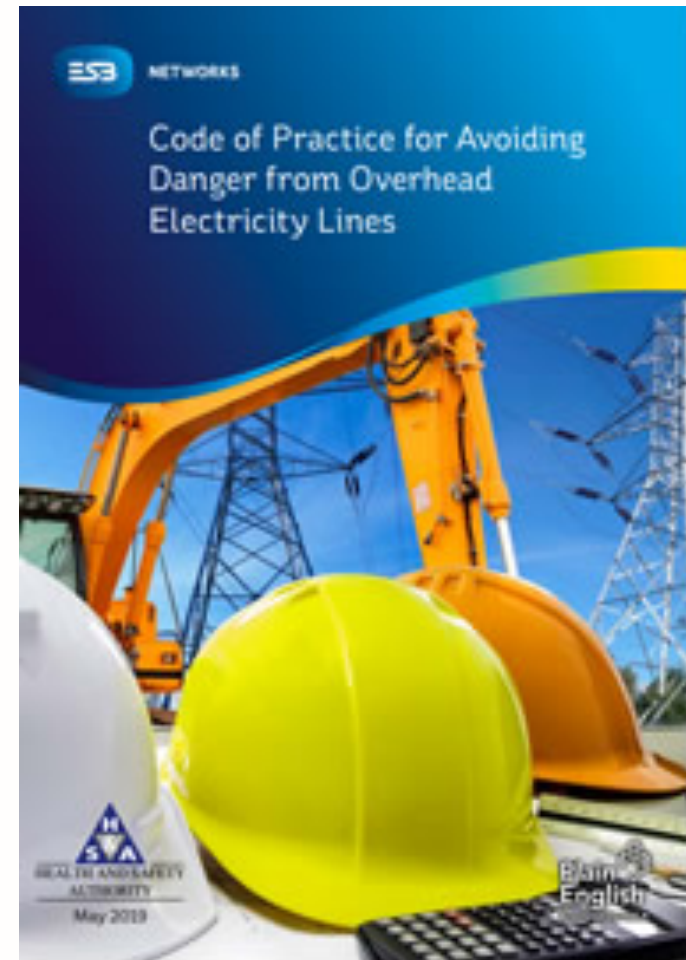
3 Key Strategic areas identified:

- Agriculture – Tractors & vehicles / livestock / WAH / Culture
- Healthcare – Violence & aggression / patient handling / slips, trips and falls
- Construction – WAH / OH / Duty holders & Workforce Structure / Plant, Machinery and Vehicles
- 20% for other mandated or reactive activity

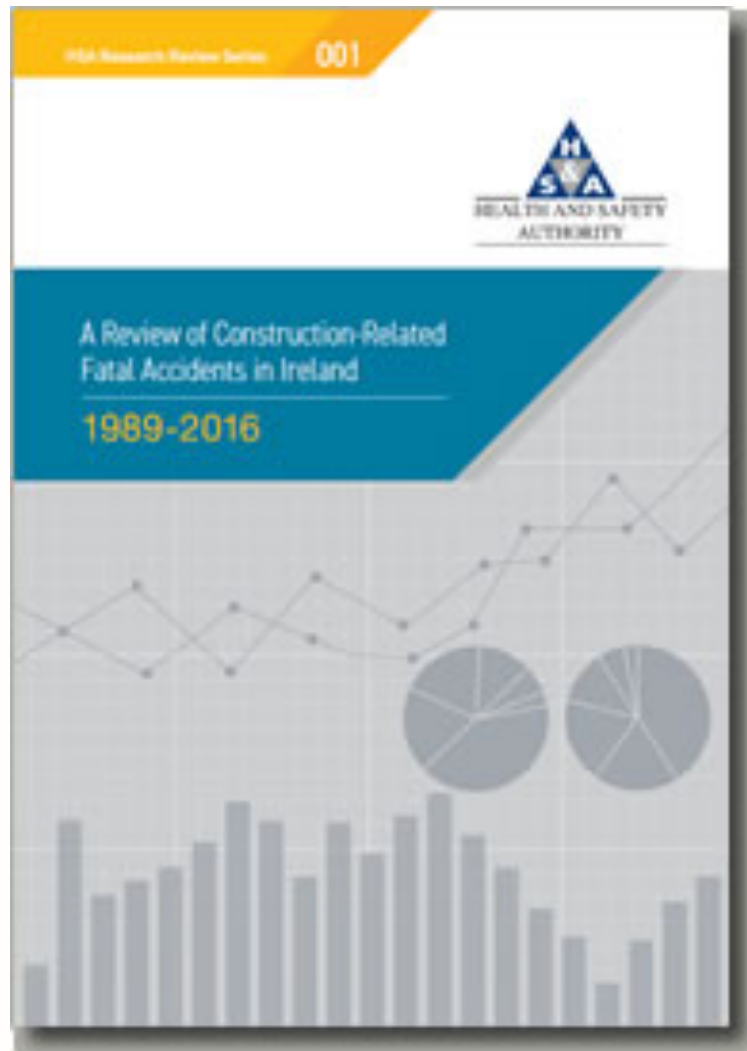
How we work

- Targeting of inspections and resources appropriately
- Clients / Designer focus
- eLearning
- BeSMART.ie
- Communications
- Collaboration – CSPAC and others

Publications 2019



Publications 2019



Thank You

michael_mcdonagh@hsa.ie